

2019

# Future Economic Contribution Port Hedland



Port Hedland Industries Council

## Creating Value and jobs for WA

Building on the economic value the Port of Port Hedland delivers to the WA economy remains a primary focus for the Port Hedland Industries Council (PHIC) for 2019.



2017/2018 Mining employment

↑  
**up 24,027 jobs**



**Iron ore** accounted for **54%** of WA's minerals & petroleum sales



Mining **30%** of GSP 2017/2018

↑  
**up 3%**

Port Hedland is the engine room of WA's economy. The Port of Port Hedland has grown to deliver \$35billion of Gross State Product to WA each year and supports one in every 20 WA jobs.

Ensuring the sustainability of industry and the growth of the Port is vital for the ongoing economic growth of the State and the Port Hedland community itself.

The future of the mining industry in the Pilbara region is strong and the flow on economic benefits of the potential growth of trade are profound.

Enabling ongoing growth of the Port over the next 10 years is forecast to generate an of \$1.2 billion per annum for the Pilbara region, \$2.4 billion per annum for the State and an average of \$3.7 billion per annum nationally.

Industry is seeking to grow throughput at the Port of Port Hedland to 700mtpa by 2026-27FY.

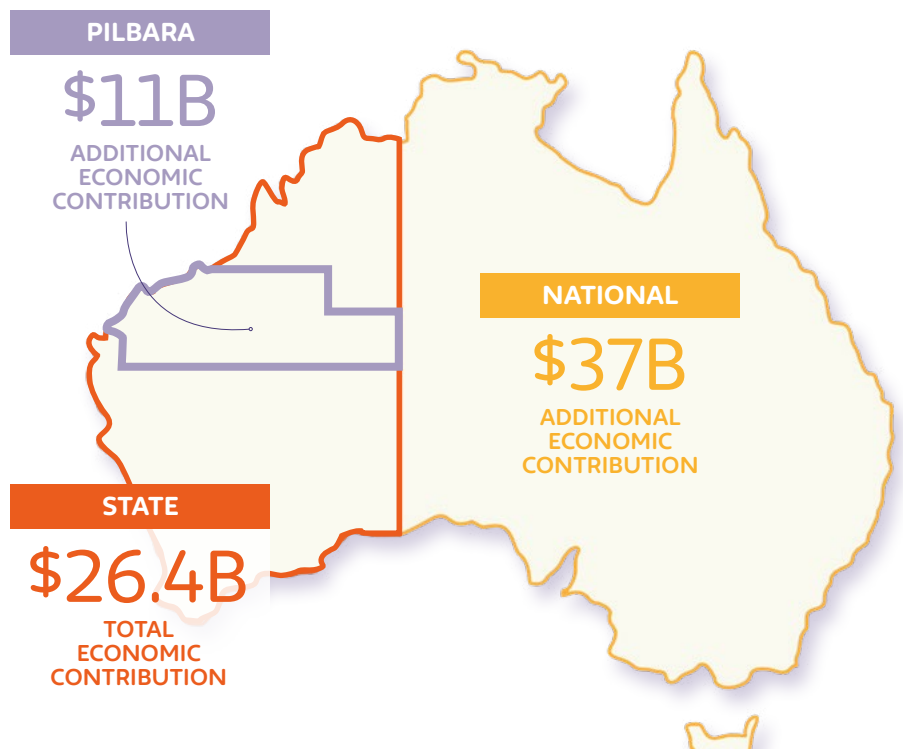
The Department of Industry Innovation and Science March 2019 report predicts Australia's iron ore exports will increase to the second highest levels on record and revenue from the export of iron ore exports to increase 21% increase in cash flow to \$74 billion this financial year.

↑ **21% increase**

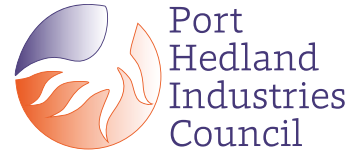
=

**\$74 billion 2018/19FY**

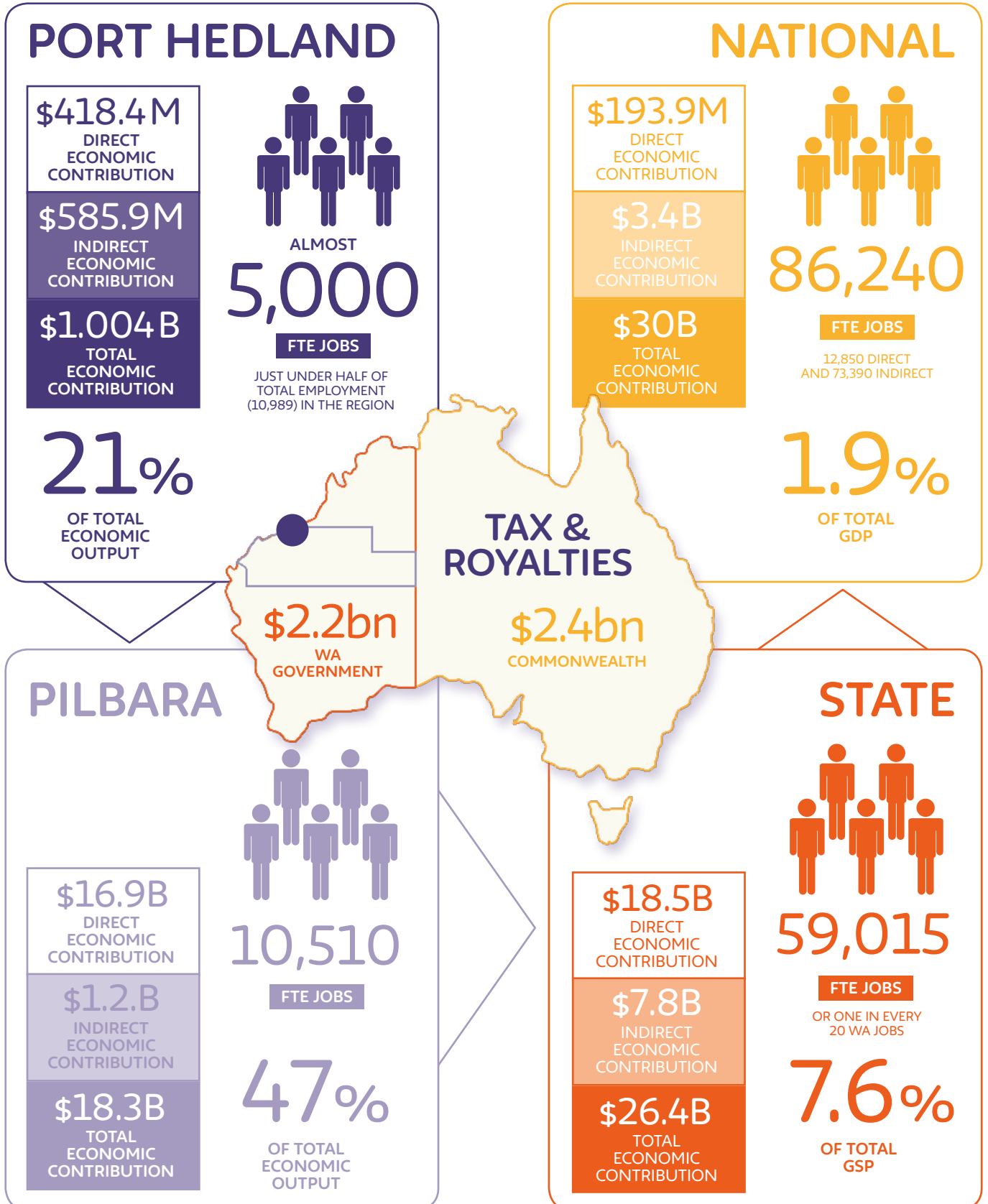
FUTURE ECONOMIC GROWTH FROM THE PORT OF PORT HEDLAND EQUALS...



# 2015/16 Port Hedland Supply Chain Economic Contribution



IN 2015/16 THE PORT OF PORT HEDLAND DELIVERED...



SOURCE: 2017 AN ECONOMIC STUDY OF PORT HEDLAND PORT, ACIL ALLEN CONSULTING