



Town of
Port Hedland



Heavy Vehicle Access Strategy

Chaz Roberts

Manager Town Planning & Development

Lee Furness

Director Infrastructure Services



Overview

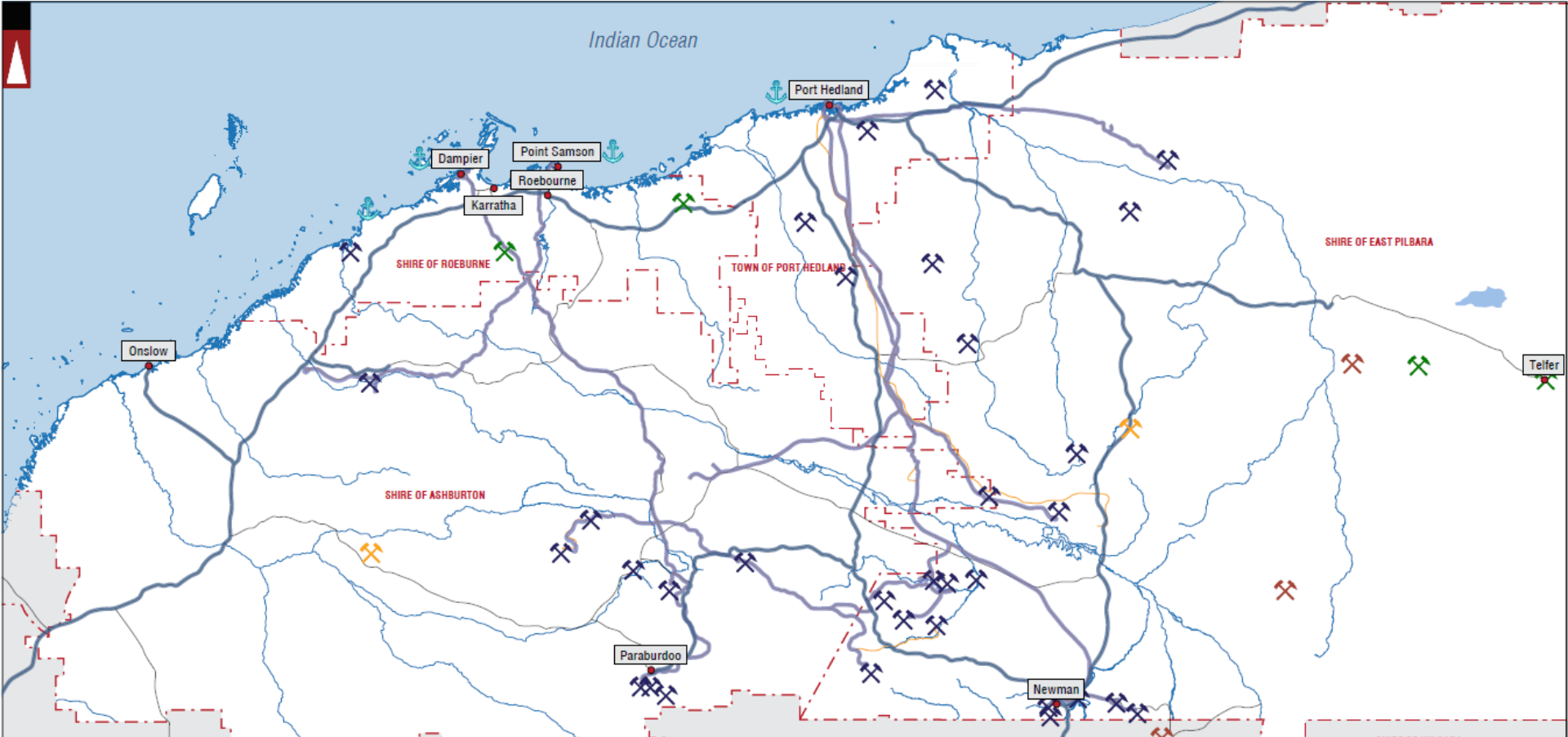
- What is the Heavy Vehicle Access Strategy?
- Heavy vehicle networks/precincts
- Issues from a local government perspective
- Future developments
- Key actions
- Questions

What is the Heavy Vehicle Access Strategy?

The strategy:

- Assesses the road hierarchy and existing/emerging RAV network
- Informs future road classifications within the LGA
- Develops an approach for the Town's assessment of temporary and permanent RAV application referrals from MRWA
- Investigates an approach to resolve road maintenance and safety issues in Wedgefield considering land use patterns

National Key Freight Routes Map



Wedgefield



February 1969



May 1969

Wedgefield



1970

Wedgefield



Wedgefield



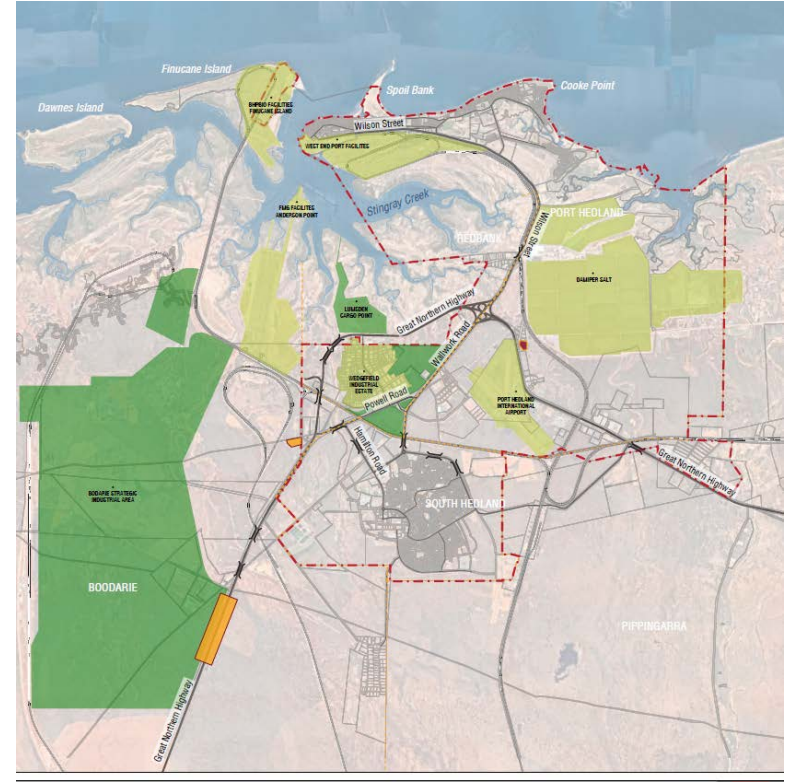
Wedgefield



Wedgefield



Future developments



Need for a proactive, evidence based road maintenance program

- Outdated traffic data
- Reactionary maintenance regime
- Ensure safety of the public

Ease cost burden for road maintenance on ratepayers

- Roads to accommodate heavy vehicles are expensive
- Assist with grant applications for road maintenance
- Investigate cost sharing approach

Integrate land use and transport networks

- Consider land use patterns when investing in upgrades
- Need to engage with landowners concerning land use issues

Key actions

- Develop traffic monitoring program
- Develop asset register and asset management plan
- Develop cost sharing approach to asset management
- Implement planning changes to address safety issues in Wedgefield
- Continue to review RAV status of roads in Wedgefield
- Evaluate mining tenements and crown leases and negotiate road maintenance agreements

Questions



Thank you