



Care for Hedland

Introduction to Care for Hedland

Lizzy Capp – Association Coordinator

Care for Hedland Environmental Association Inc

Who is Care for Hedland?



- Care for Hedland – environmental organisation dedicated to connecting people to the environment
- CFH has been around since 2003 and have been running our turtle monitoring program since 2004, Garden Program 2006, Street Blitz 2007, CDS Pilot 2009
- Since then, we have expanded into a multi-program organisation with over 150 members, staff and volunteers making us who we are today
- Principal partner BHP, have had an ongoing relationship for over 14yrs, \$3M for activities and programs.
- Additionally receive over \$150k annually in-kind and financial supports for activities and programs



Key Strategic Areas – What is our focus?



Advocacy, Education and Outreach

Marine and Coastal Biodiversity

Land Management

Sustainable Living



Care for Hedland

Building Organisational Governance

Our Programs

RSL South Hedland Community Garden

Has evolved and grown from its inception in 2006. Moved from Pretty Pool and in 2016 constructed our successful RSL South Hedland Community Garden. Continued strong presence with local school, daycares and early learning centres.

2020:

- Not many people through the garden, but 48 live streamed videos with 11,000+ times!

2021:

- 7 live stream so far, with 1,600+ times
- 105 volunteers so far with 270 volunteer hours!
- Plant Sale, open harvests, Kids Club
- So far, there have been 662 people through the community garden already!





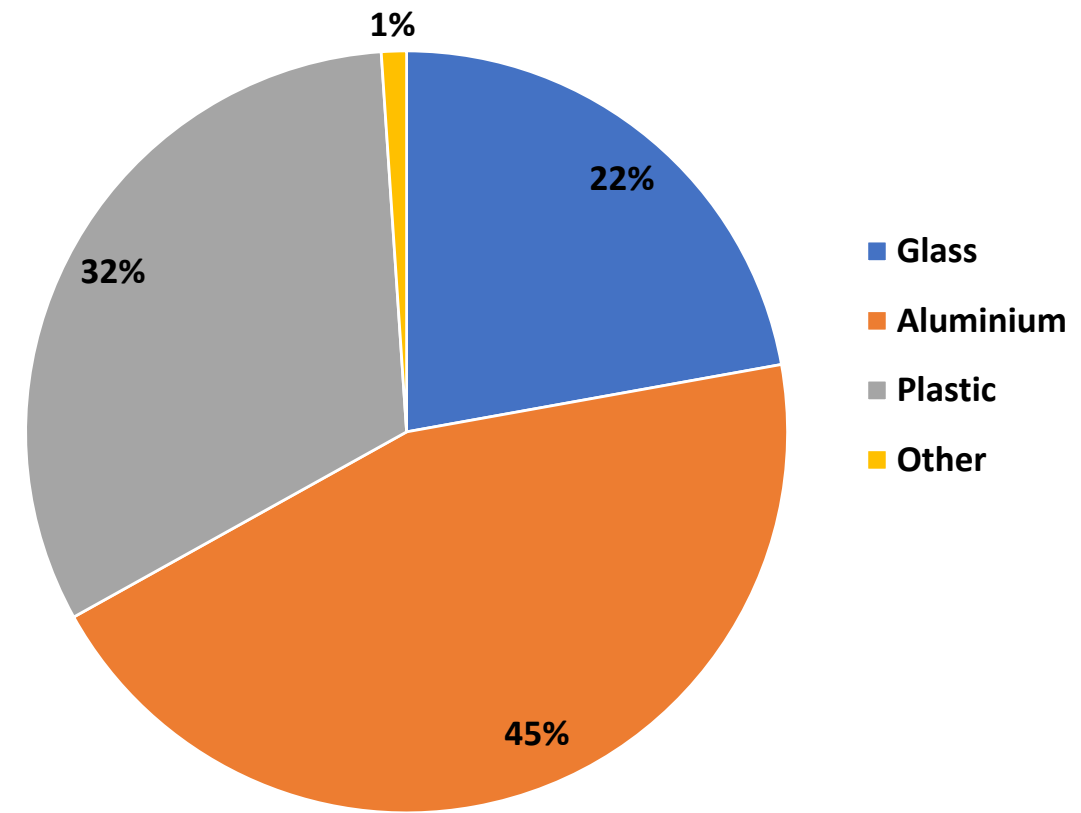
Waste Program

- In 20/21, close to 2,000 volunteers have taken part in litter collection activities!
- Since the start of 2021, volunteers have litterpicked 658.24kgs of rubbish!
- Adopt-a-spots twice monthly
- Larger national events such as Clean Up Australia Day, World Clean Up Day/South Hedland Street Blitz and Tangaroa Blue WA Beach Clean Up Day throughout the year
- Support TOPH and Cleanaway with education for the Town's kerbside Recycling Program



Containers for Change

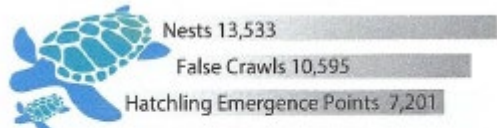
- +3.5 million containers recycled in just over 7 months
- 29 casual employees currently
- Group of the Month, plus multiple community groups
- Volunteers and mobile refund points to increase recycling reach!



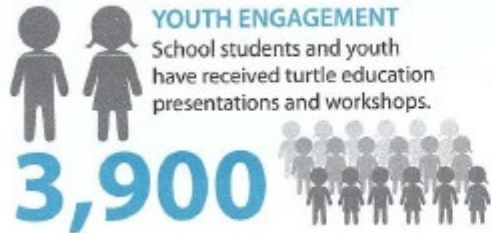


Turtle Monitoring 2004-Present

- We conduct morning track monitoring, evening monitoring and night tours and our scientific team runs from October- December (season itself runs October – March)
- Later in the season, we usually see hatchlings coming out of their nests and are able to watch them make their way to the water



99 EXCAVATED NESTS
99 nests have been excavated to determine nest success.

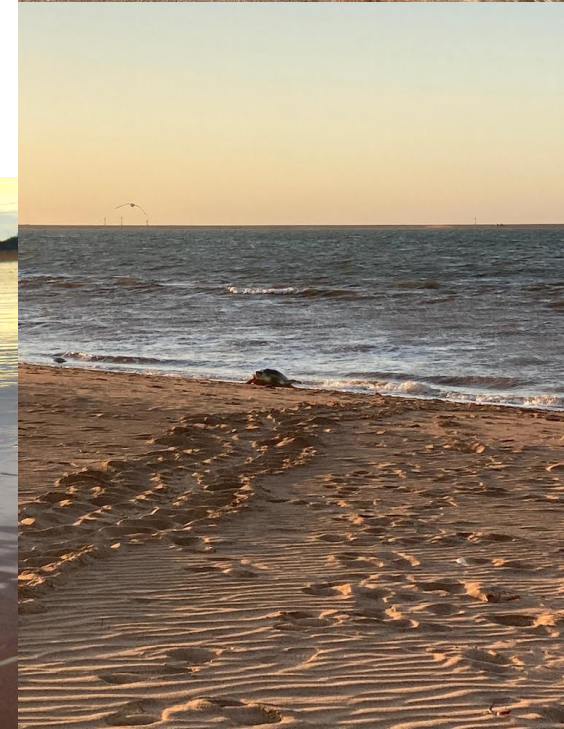


548 FLIPPER & PIT TAGGED
have been flipper & PIT tagged since 2012.

320 DNA SAMPLES
have been collected as part of a familial relationship study since 2015.



15 FLIPPER TAGGED TURTLES NESTS PER SEASON
From the flipper and PIT tagging each season, it is being observed and recorded that approx 10-15 individuals have been nesting on other nearby locations including Cowrie Beach (Munda), Varanus Island and Barrow Island.



Community Engagement

Principal Partner: BHP

- Principal partner of 14 years, \$3M towards programs, activities, education programs
- Partnership has been growing and evolving over the past 14 years, from what started as short term assistance, is now consistent and overall support for the whole association
- BHP has encouraged the support of many other local businesses and organisations, government and the local community.

BHP





- Over 6,500 children have taken part in workshops and gardening related activities in Hedland
- Over 900 adults a year visit the RSL Community Garden (*COVID impacted 20/21)
- Care For Hedland Coordinators collectively visit and freely deliver environmental/sustainability content to Hedland early learning/daycares and schools around 30 times a year!
- Turtle monitoring training delivered to community members annually. In 2020/21, we had 74 people attend our training sessions!
- This turtle season, we had 113 volunteers who dedicated 1194 hours to the turtle program



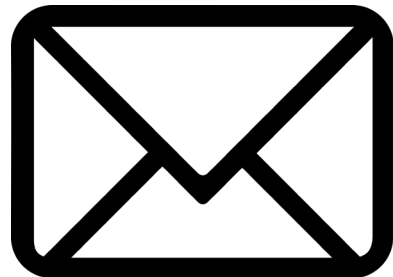


- During turtle season, our coordinators are on call to assist with turtle rescues
- We do a lot of fundraising through the course of the year including our Christmas present wrapping stall and raised money for our turtle program (partnership with Charter Hall for over 5 years)
- In our 20/21 season, we had 18 out of town volunteers, most of which were uni students looking for experience.



Where can you find us?

- Website: www.careforhedland.org.au
- Instagram: careforhedland
- Facebook: Care for Hedland Environmental Association
- Email: coordinator@careforhedland.org.au or 0488 907 260
- Containers for Change: 15 Moorambine St, Wedgefield



Thank you!

Questions?