

Delivering the Spoilbank Marina



**Presentation to the PHIC Community Industry Forum
John Freimanis, Project Manager Spoilbank Marina
Wednesday 10 August 2022**

Context



- June 2020: WA Government announced the delivery of the Spoilbank Marina
- Project funded by the WA Government, the Town of Port Hedland and BHP
- Pilbara Ports Authority is leading the delivery of the project, along with our project partners



Department of
Transport



PILBARA PORTS
AUTHORITY



BHP



Town of
Port Hedland

Project progress – Stage 1



March 2021: Completion of access roads to the Marina site

Project progress - Earthworks and rock

- Over 60 per cent of material removed from the marina basin. Most material re-used to fill other areas of the site.
- Marina basin is approximately two metres from final level
- Over 50 per cent of the rock wall around the marina basin now complete



Project progress - Earthworks and rock



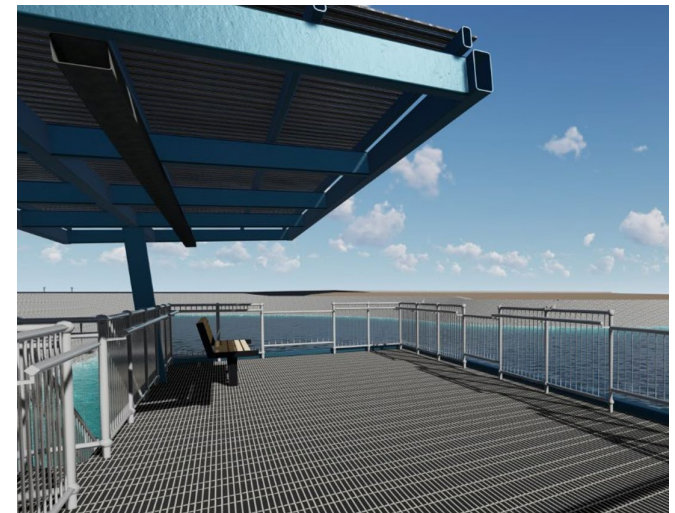
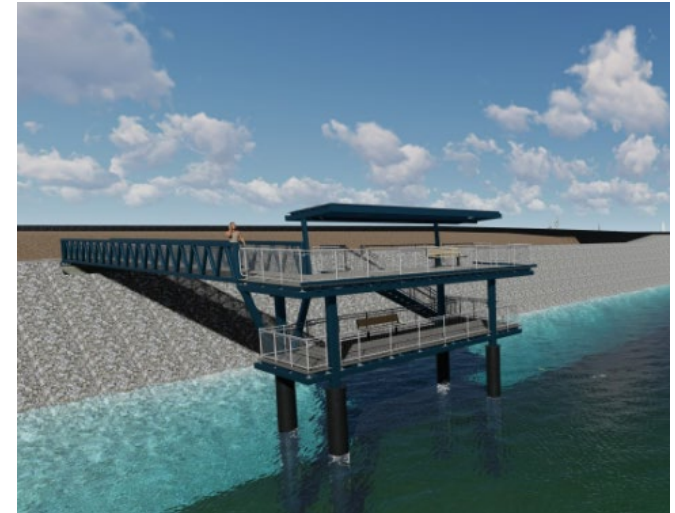
Project progress - Dredging

- Dredge arrived from the Middle East in July
- Dredging works will create a navigation channel for the marina
- Dredging will stop prior to the flatback turtle nesting period – 1 December



Project progress – Marine structures

- Detailed designs finalised
- Works include constructing the boat ramp, boat pens, public jetty and navigation aids
- SMC Marine will mobilise to site in September to start the boat ramp
- The public jetty will be fabricated later this year and installed in 2023



Timelapse video - May 2022



Project progression

February
2022



July 2022



300,000M³
FILL EXCAVATED



190,000M³
MATERIAL TO
BE DREDGED



4 ^{OUT OF} 5
MAJOR
CONTRACTS AWARDED

80%
SPEND AWARDED TO
PILBARA BUSINESSES

\$75
MILLION
IN CONTRACT
VALUE AWARDED

Benefits to the Pilbara

80 per cent of project spend awarded to Pilbara-based and registered Aboriginal businesses

Approximately 140 jobs created to date

Our contractors are actively engaged in the community. MGN Civil employs mostly Port Hedland locals



Public art



Concept design proposals are now under review by PPA and the Public Art Selection Committee



Upcoming works

Package 4 – Civil and Landscaping, open for tender



Sub-contracting opportunities



SECURE WORK ON THE SPOILBANK MARINA

Register your interest for local sub-contractor opportunities
at pilbaraports.com.au/SpoilbankMarina

Follow our progress



Spoilbank Marina

@SpoilbankMarina · Sports & Recreation

Following

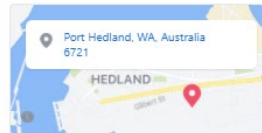
Home Jobs Videos Photos More ▾

Liked



About

See All



1 Pilbara Ports Authority is leading the delivery of the Spoilbank Marina in Port Hedland. PRA is working closely with the Department of Transport, Dev... See more

1 Disclaimer: Pilbara Ports Authority embraces social media as a valuable communication tool in the promotion, development and delivery of information... See more

1,103 people like this

1,314 people follow this

4 people checked in here

<http://www.pilbaraports.com.au/spoilbank-marina>

Price Range · Not Applicable

spoilbank.marina@pilbaraports.com.au

Sports & Recreation · Marina · Local Service

@pilbaraports



Spoilbank Marina

6h · 🌐

Did you know that Cemetery Beach, near the Spoilbank Marina, is a favourite nesting site for the flatback turtle?

The flatback turtle has an olive-grey shell, which is flattened on top. It has four pairs of costal scales (the large scales on either side of the shell) and upturned edges. It can reach up to 1m long and weigh up to 90kg.

Flatback turtles feed on soft-bodied prey such as sea cucumbers, sea pens, soft corals and jellyfish... See more



Reach More People With This Post

You could reach up to 824 people daily by boosting your post for A\$35.

6

Like

Comment

Share

MARINA MATTERS

Spoilbank Marina project newsletter



ISSUE 05 // AUGUST 2022

Dredging works commence

The next stage of the Spoilbank Marina project is underway, with dredging to create a navigational channel from the marina basin out to deeper water.

The backhoe dredge undertaking the work was transported from the Middle East on board a semi-submersible heavy load carrier.

Over the next few months, the backhoe dredge, accompanied by two split hopper barges, will start at the channel's northern end and work towards the marina.

On completion, the 900 metres long channel will be 2.5 metres deep at the lowest tide - enough to accommodate most recreational vessels.

Up to 190,000 cubic metres of marine sediments will be removed from the seabed and deposited at an existing offshore spoil ground, 12 kilometres away.

Hall Contracting were awarded

the \$21.4 million dredging contract in May.

Minister for Ports, Hon Rita Saffioti MLA, announced the tender award while she was in Port Hedland and said this is another great opportunity for local businesses to be part of the Spoilbank Marina project.

To date 80 per cent of the spend for this project has been awarded to Pilbara based businesses.

The dredging will finish prior to the peak flatback turtle nesting period, which starts on 1 December, and may recommence from 1 April 2023.

The dredge arriving at the Port of Port Hedland, prior to works commencing



Questions?



Contact us: Spoilbank.Marina@pilbaraports.com.au