



Australian
BORDER FORCE

Australian Border Force

Our mission is to protect Australia's border and manage the movement of people and goods across it

The Department of Immigration and Border Protection

- Facilitates trade, travel and migration while protecting Australia from threats to the border.
- Responsible for immigration and customs border policy.
- Manages the Migration Programme, the Humanitarian Programme, Australian citizenship, trade and customs, offshore maritime security and revenue collection.
- Office locations in every Australian state and territory, and in 52 locations around the globe.

The Australian Border Force (ABF)

- The ABF is the operational arm of the Department.
- Manages the flow of people and goods across Australia's border to maximise travel and trade.
- Minimises threats to community safety and national security.
- Responsible for the border protection, immigration compliance and enforcement functions.
- ABF officers exercise powers under the *Maritime Powers Act 2013*, the *Customs Act 1901*, the *Migration Act 1958* and the *Australian Border Force Act 2015*.

At sea

- Maintain an armed presence around Australia's 37,000 kilometres of coastline and respond to reported or suspected border incidents and illegal activity.

Airports and Seaports

- ABF officers are positioned at all eight international airport and over 60 international seaports around Australia.
- ABF detector dog teams also play a significant role in helping protect our borders from the importation of prohibited and restricted goods.
- Detector dog teams are trained to search in a range of challenging border environments and can quickly and efficiently search luggage, parcels, mail, cargo containers, vessels and vehicles.

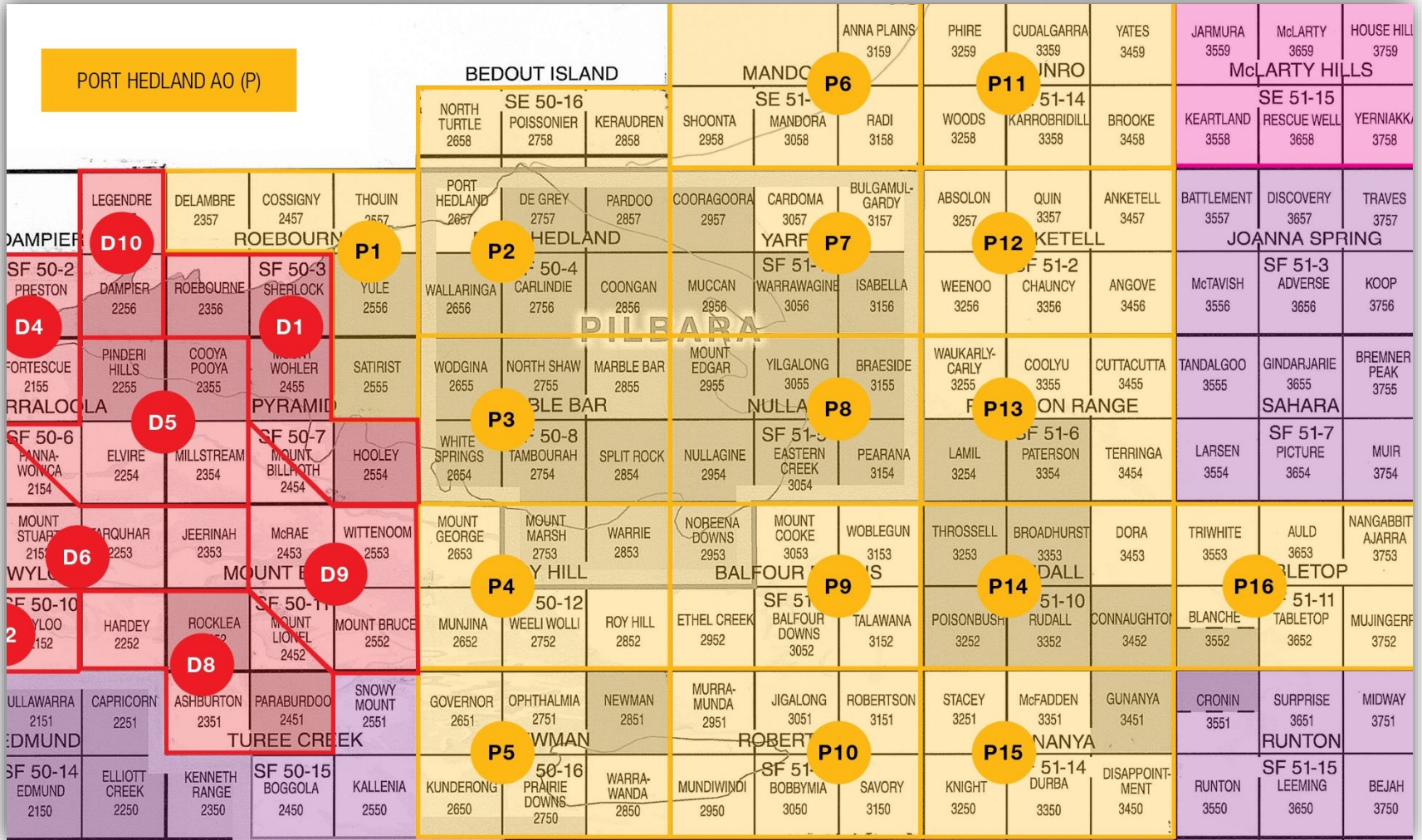
Each week on average we...

- Clear **692,692** air passengers arriving or departing from Australia
- Process **52,500** passengers and crew arriving by sea
- Inspect **1.1 million** mail items
- Collect over **\$366 million** in revenue on behalf of the Australian Government
- Seize a number of prohibited items including **730 drug imports**
- Locate **285 unlawful non-citizens**

Port Hedland District Office

- Manage vessel movements, control people and goods crossing the border across all 20 berths within the port.
- Respond to border threats such as the importation of prohibited items and unlawful non-citizens.
- Patrol the coastline from Balla Balla to 80 mile, conduct Border Watch visits at various stations to safeguard the community.
- Patrol the Port of Port Hedland together with Department of Transport or with our Pilbara Coast vessel.
- Manage international flight movements including freight, medivac, and private flights. Weekly Bali flight may resume in 2023.

Port Hedland Area of Operation



PROTECTED

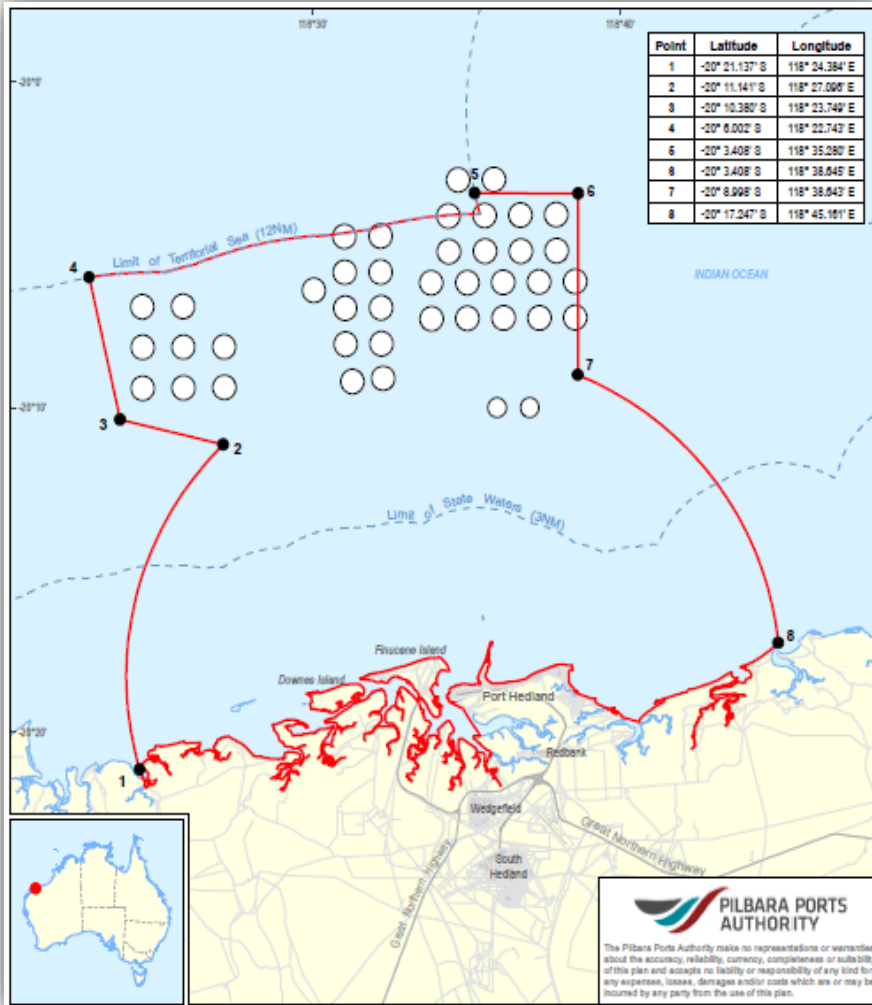
Port Hedland Section 15

S15 boundary extends 12.5nM.

Majority of anchorage locations were outside of the existing S15 boundary until December 2020.

Two anchorage locations remain outside the S15 boundary due to the limits of the Territorial Sea.

Port Hedland ABF Officers invoke *Maritime Powers Act 2013* in order to conduct intervention activities outside of the S15 boundary.



PROTECTED

ABF Operational Statistics



Maritime

3,225 movements processed in 2021.

Current projections for 2022 is approximately 3,400 movements.

Each movement carries 20 crew on average.

Majority of crew are Filipino and Chinese nationals.

Vessels commonly travel between China and Port Hedland.



BORDER WATCH

1800 06 1800

Help protect Australia's border

ABF AIRCRAFT



DEFENCE AIRCRAFT



ABF HELICOPTERS



AUSTRALIAN MARITIME IDENTIFICATION SYSTEM



REGIONAL FORCES SURVEILLANCE GROUP



SATELLITE SURVEILLANCE





BORDER WATCH

1800 06 1800

Help protect Australia's border

ABF / RAN Cape Class



ABFC Ocean Shield



ABF Bay Class



RAN Armidale Class



ABFC Thaiyak



ADV Ocean Protector





BORDER WATCH

1800 06 1800

Help protect Australia's border

Variant 1 – ABF Rottneest Island



Variant 2 – ABF Pilbara Coast





BORDER WATCH

1800 06 1800

Help protect Australia's border

Border Threats

- People Smuggling
- Illicit drugs and Precursors
- Performance enhancing substances
- Foreign Fishing Vessels
- Tobacco
- Weapons
- Dangerous goods
- Protected wildlife,
- Offensive material,
- Copyright breaches, and Counterfeit goods
- Terrorism



BORDER WATCH

1800 06 1800

Help protect Australia's border

Illicit Drugs, Precursors and Prohibited Items

- ICE
- MDMA
- Cocaine
- Heroin
- Amphetamine-Type Stimulants (ATS)
- Ephedrine
- Performance and Image Enhancing Drugs (PIEDS)
- Objectionable material
- Steroids
- Blowpipes, darts, Knuckle dusters, Sling shots
- Electronic shock devices
- Soft air pistols
- Tobacco (permit required from 01 July 2019)





BORDER WATCH

1800 06 1800

Help protect Australia's border

Concealments





BORDER WATCH

1800 06 1800

Help protect Australia's border

Border Threats

Educating Industry on what to look for and how to report suspicious behaviour, activities or goods to Border Watch.

- **Suspicious behaviours**
- **Suspicious activities**
- **Suspicious goods**

A combination of one or more of these indicators may be of interest.



BORDER WATCH

1800 06 1800

Help protect Australia's border

Common suspicious indicators:

Wharf security

- Workers or crew members acting nervously.
- Workers or crew members located outside their normal work environment.
- Workers or crew members in possession of tools that are inconsistent with their employment.
- Workers or crew members showing an unusual interest in ABF/security processes.



BORDER WATCH

1800 06 1800

Help protect Australia's border

Common suspicious indicators:

Wharf or port authorities

- Workers offering to work on a Rostered Day Off
- Workers or crew members accessing cargo without authority
- Workers or crew members arriving or leaving the vessel/wharf at unusual hours
- Unusual waterside activity such as divers or small craft moving around the vessel/wharf



BORDER WATCH

1800 06 1800

Help protect Australia's border

Hull Attachments

Cocaine found in parasite tube, attached to US tanker hull





BORDER WATCH

1800 06 1800

Help protect Australia's border

CASE STUDY – 30.2kg of Methamphetamine



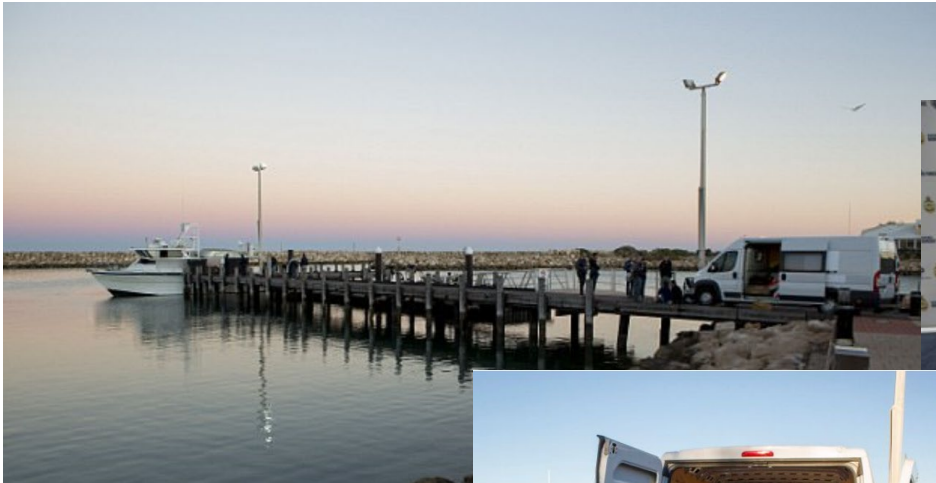


BORDER WATCH

1800 06 1800

Help protect Australia's border

CASE STUDY – 1,296kg of Methamphetamine





BORDER WATCH

1800 06 1800

Help protect Australia's border

CASE STUDY – 9.6kg Ecstasy on Cattle Vessel



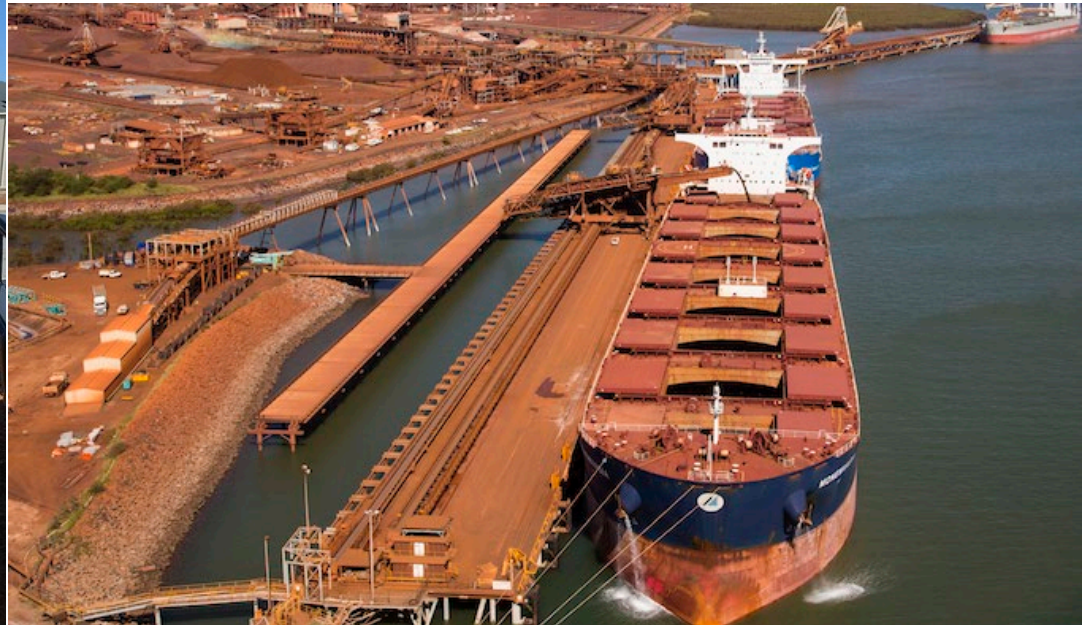


BORDER WATCH

1800 06 1800

Help protect Australia's border

CASE STUDY – VESSEL DESERTER





BORDER WATCH

1800 06 1800

Help protect Australia's border

How to report

- Call Border Watch (toll free) **1800 06 1800**
- Or online report form **abf.gov.au/borderwatch**
- You can remain **anonymous**
- You can report **confidentially**

Seen suspicious customs,
border protection, visa or
immigration activity?

Report online to
BORDER WATCH



BORDER WATCH

1800 06 1800

Help protect Australia's border

Closing

- If it doesn't feel right, flag it
- Industry is our Frontline - Trust your instincts, your knowledge
- You are the expert in your field
- If you see or hear anything suspicious please report it.

Thank you for your time – Questions?