



Iron Bridge

We are Fortescue

SEPTEMBER 2023

Forward Looking Statements Disclaimer



Important Notice

The purpose of this presentation is to provide general information about Fortescue Metals Group Ltd and its subsidiaries (“Fortescue”). It is not recommended that any person makes any investment decision in relation to Fortescue based on this presentation. This presentation contains certain statements which may constitute “forward-looking statements”. Such statements are only predictions and are subject to inherent risks and uncertainties which could cause actual values, results, performance or achievements to differ materially from those expressed, implied or projected in any forward-looking statements. No representation or warranty, express or implied, is made by Fortescue that the material contained in this presentation will be achieved or prove to be correct. Except for statutory liability which cannot be excluded, Fortescue and its respective officers, employees and advisers expressly disclaims any responsibility for the accuracy or completeness of the material contained in this presentation and excludes all liability whatsoever (including in negligence) for any loss or damage which may be suffered by any person as a consequence of any information in this presentation or any error or omission therefrom. Fortescue accepts no responsibility to update any person regarding any inaccuracy, omission or change in information in this presentation or any other information made available to a person nor any obligation to furnish the person with any further information.

Additional Information

This presentation should be read in conjunction with the Annual Report at 30 June 2022 together with any announcements made by Fortescue in accordance with Fortescue’s continuous disclosure obligations applying to it as a company listed on the Australian Securities Exchange. Any references to reserve and resources estimations should be read in conjunction with Fortescue’s Ore Reserves and Mineral Resources statements released to the Australian Securities Exchange on 26 August 2022. Fortescue confirms in the subsequent public report that it is not aware of any new information or data that materially affects the information included in the relevant market announcement and, in the case of estimates of mineral resources or ore reserves, that all material assumptions and technical parameters underpinning the estimates in the relevant market announcement continue to apply and have not materially changed. All amounts within this presentation are stated in United States Dollars consistent with the functional currency of Fortescue, unless otherwise stated. Tables contained within this presentation may contain immaterial rounding differences.

Integrated mine to market infrastructure



Pilbara Western Australia

- Iron ore operations
- Chichester Solar Gas
- Pilbara Energy Connect
- Rail operations
- Concentrate and return water pipeline
- Raw water pipeline
- ⚙ Chichester solar project
- ⚙ Pilbara Energy Connect solar farm

Eliminating emissions



Real Zero by 2030

Scope 1 and 2 terrestrial emissions target across Fortescue's Australian iron ore operations

Net Zero Scope 3

emissions targeted by 2040

Decarbonisation plan

Costed plan to eliminate fossil fuels

Iron Bridge



67%

High grade magnetite concentrate

22mtpa

Annual production capacity

US\$45/wmt

Life of mine attributable C1 cost

First ore on ship



March 2019



August 2023





659

Operations team

17 per cent

Female employment rate

11 per cent

Aboriginal employment rate



A\$3.6b

in goods and services sourced in Western Australia

A\$330 million in contracts

Awarded to Nyamal businesses since 2019

4 VTEC trainees

FY24



Safety is our number one priority

Risk reduction campaigns

Psychosocial safety



North Star and Glacier Valley

Magnetite ore bodies

840Mdt

Ore reserves

Thiess

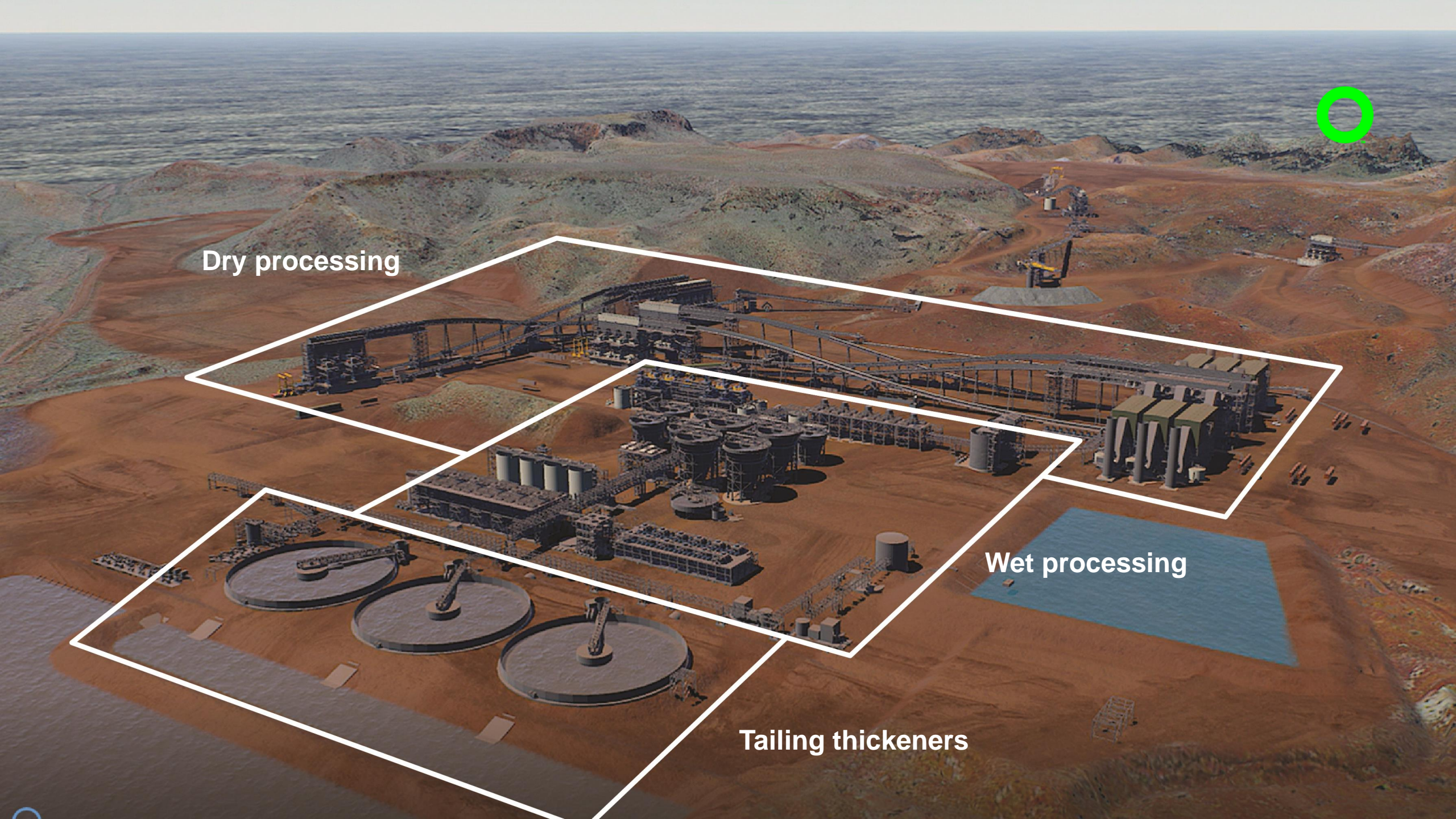
Mining and Mobile Maintenance vendor partner



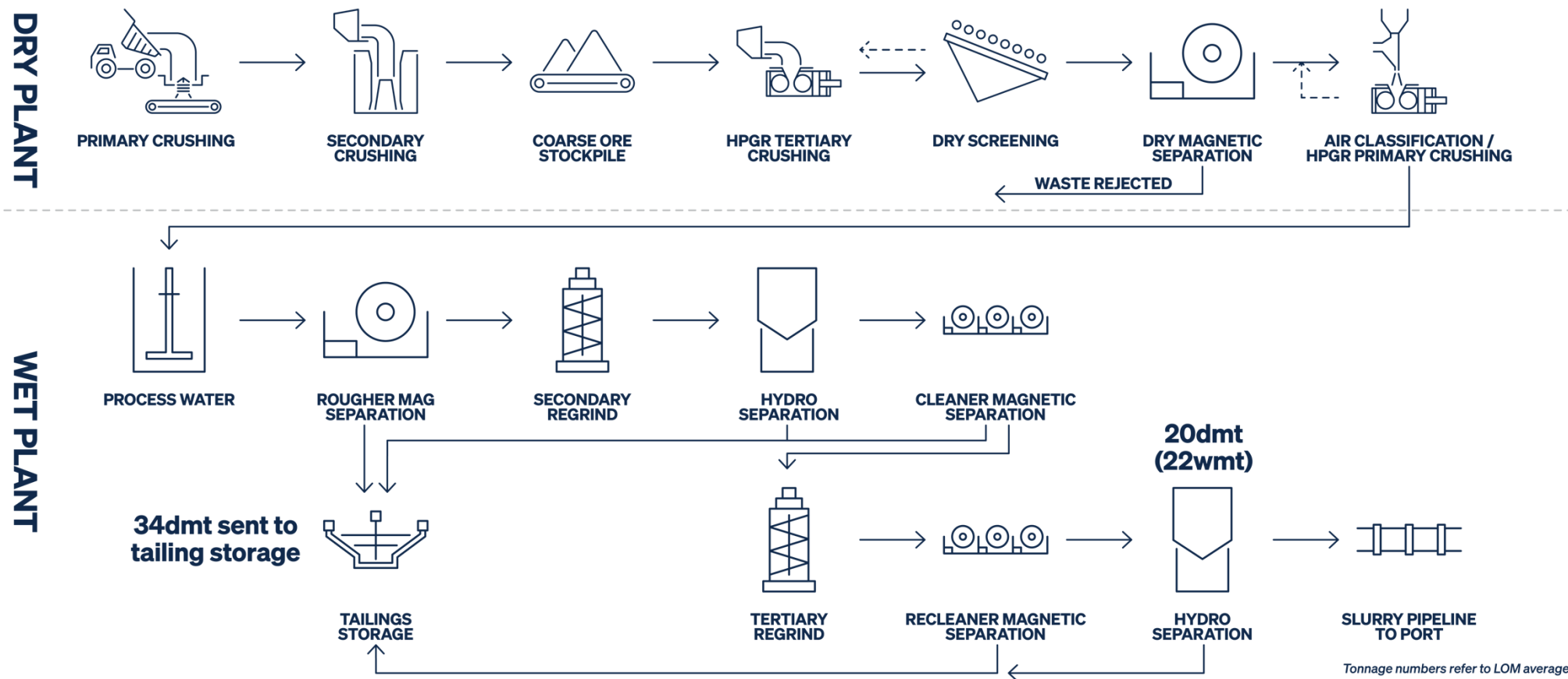
Dry processing

Wet processing

Tailing thickeners



Iron Bridge OPF process flow





135 km

Concentrate slurry pipeline from Iron Bridge to Port Hedland

Return water pipeline

Product dewatering facility with return pipeline to mine

Existing infrastructure

Surge bins, conveyors, transfer chutes



20GI

Water license

135km

Concentrate and return water pipeline

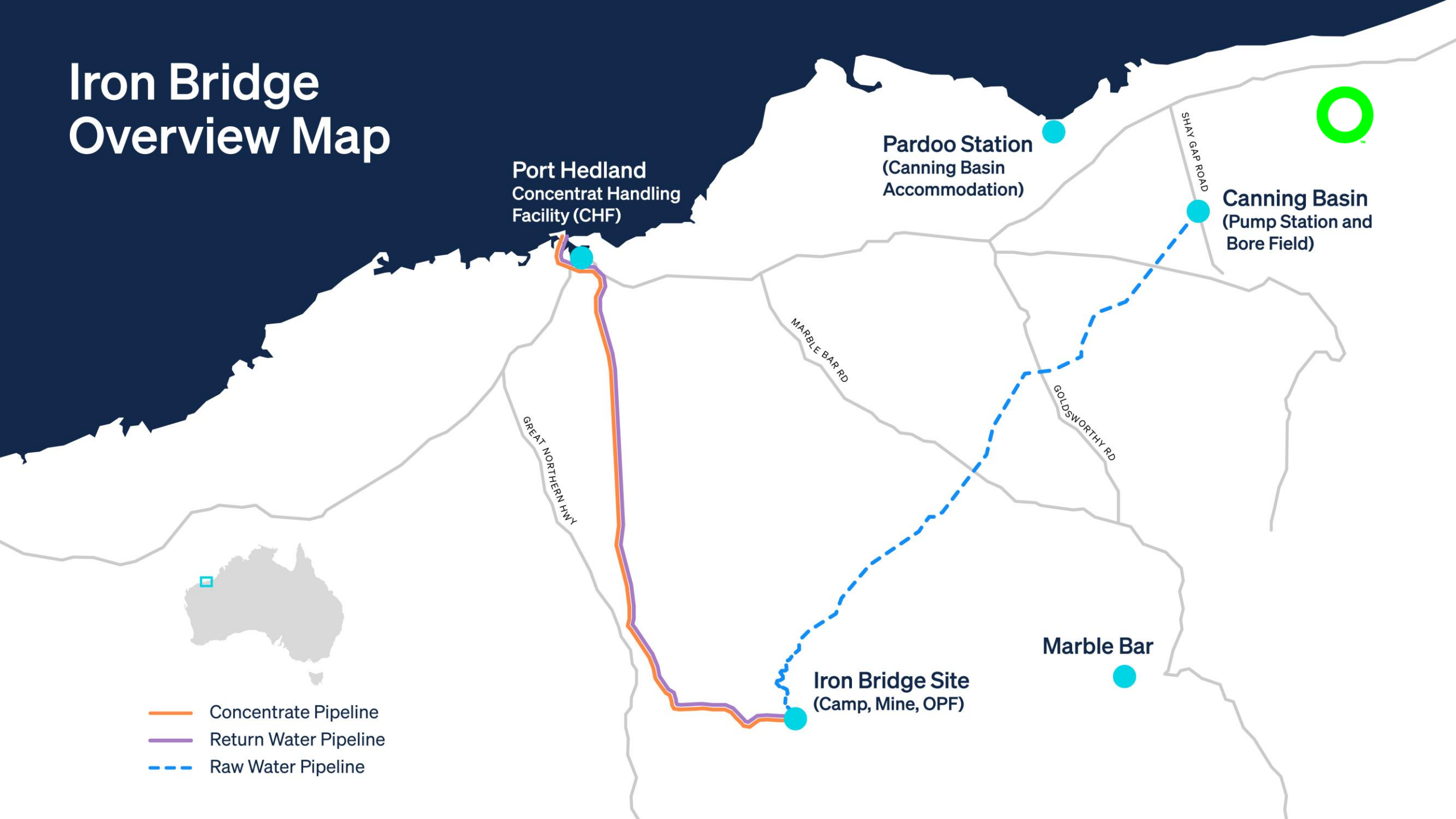
200km

Raw water pipeline

10 bores

At West Canning Basin

Iron Bridge Overview Map



Port Hedland
Concentrat Handling
Facility (CHF)

Pardoo Station
(Canning Basin
Accommodation)

Canning Basin
(Pump Station and
Bore Field)

MARBLE BAR RD

GOLDSWORTHY RD

SHAY GAP ROAD

GREAT NORTHERN HWY

Marble Bar

Iron Bridge Site
(Camp, Mine, OPF)

- Concentrate Pipeline
- Return Water Pipeline
- Raw Water Pipeline



Iron Bridge





We are Fortescue

fortescue.com