



PHIC COMMUNITY INDUSTRY FORUM PRESENTATION



WHO IS RED HAWK MINING?



DIRECTORS

Hon. Cheryl Edwardes, AM	<i>Independent Non-Executive Chair</i>
Steven Michael	Managing Director and CEO
Rob Foster	Non-Executive Director
Daniel Harris	Independent Non-Executive Director
Amy Jiang	Non-Executive Director

MANAGEMENT TEAM

Adam Hall	GM – Projects
Jeanette Hasleby	GM – ESG and Approvals
Matt Owen	Chief Financial Officer
Andrew Whitehead	GM – Commercial
Brendon Grylls	Chair – Pilbara Advisory Committee
Lisa Wynne	Company Secretary

MAJOR SHAREHOLDERS

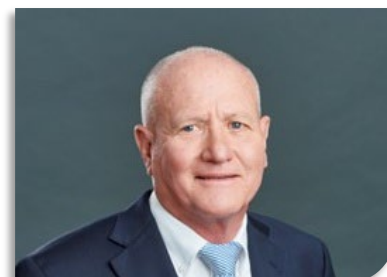
Todd Corporation	60.71%
OCJ Investment (Australia)	21.20%



HON. CHERYL EDWARDES, AM
NON-EXECUTIVE CHAIR



STEVEN MICHAEL
MANAGING DIRECTOR AND CEO



DANIEL HARRIS
NON-EXECUTIVE DIRECTOR



AMY JIANG
NON-EXECUTIVE DIRECTOR



ROB FOSTER
NON-EXECUTIVE DIRECTOR



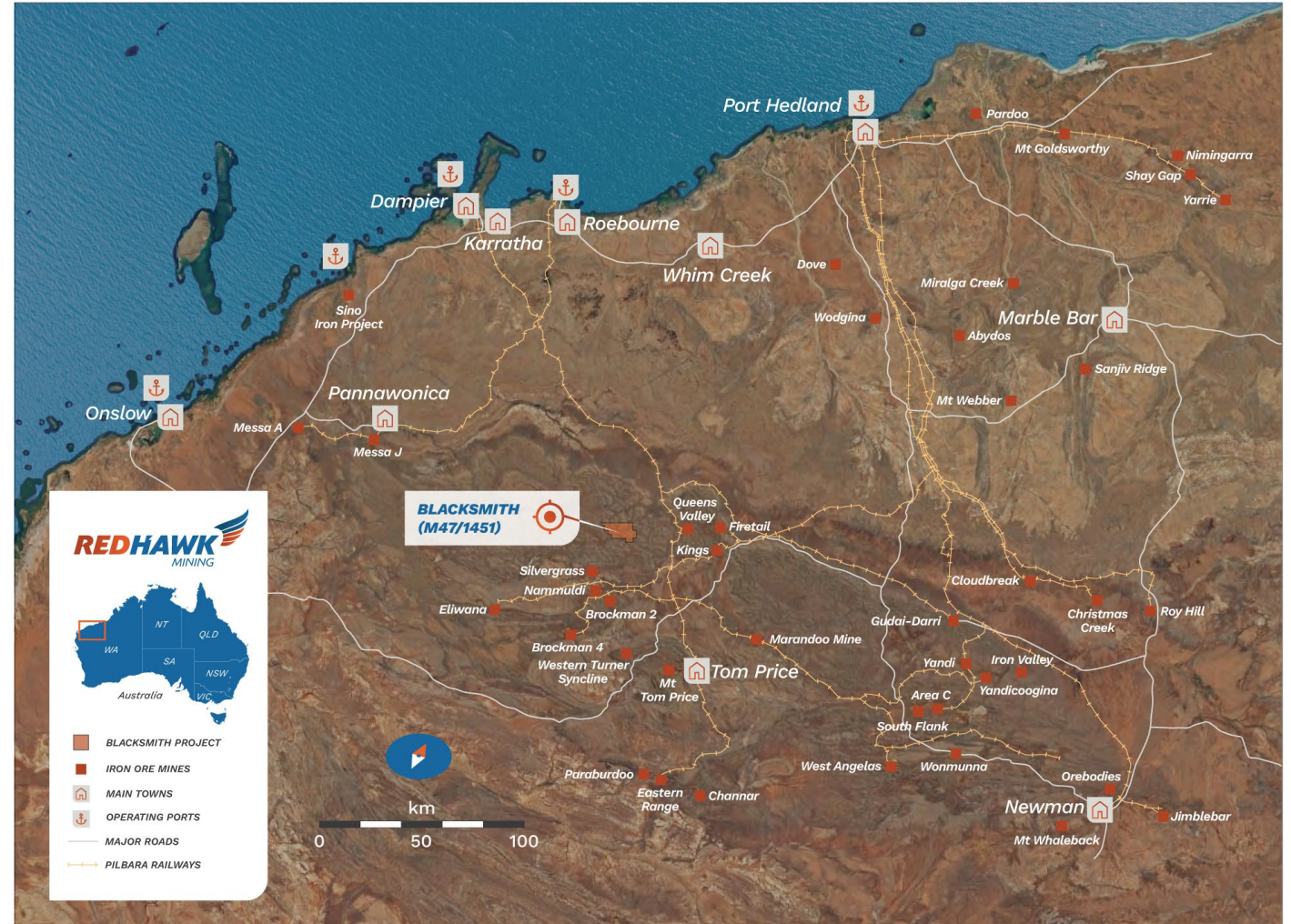
BRENDON GRYLLS
CHAIR - PILBARA ADVISORY COMMITTEE



JEANETTE HASLEBY
GENERAL MANAGER – ESG AND APPROVALS

WHERE IS THE BLACKSMITH PROJECT?

- Approximately 70km north-west of Tom Price
- Nestled amongst major iron ore projects
- The region contains significant road, rail and power infrastructure



BLACKSMITH PROJECT SUMMARY

- Pre-Feasibility Study released in May 2024
- Inclusion of four deposits in the mine plan – Delta, Paragon, Blackjack and Champion
- Recently announced Eagle resource increases total Blacksmith Mineral Resource Estimate to 243Mt
- Maiden Ore Reserve at the Delta deposit underpins the first 13 years of production
- Development of an AACE Class 4 capital and operating cost estimate and execution schedule

ANNUAL PRODUCTION

5Mtpa

NPV_{8%} (PRE-TAX)

\$523M

CAPITAL PAYBACK

3.3 years

AVERAGE GRADE

60.5% Fe

IRR (PRE-TAX)

31%

LIFE OF MINE

23 years

LOM C1 COSTS

US\$51/t

CAPITAL COSTS

\$217M

TOTAL LOM PRODUCTION

101Mt

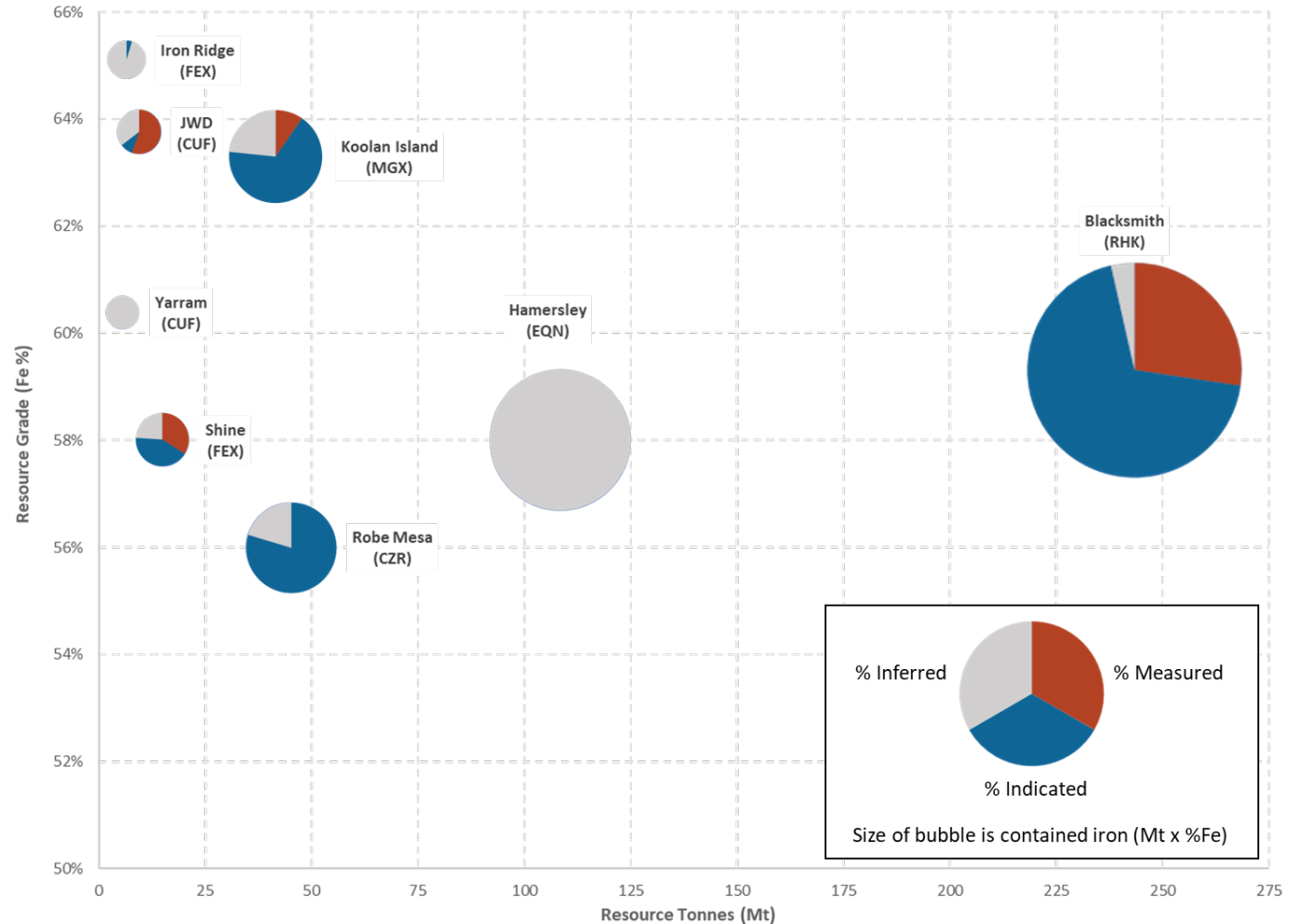


BLACKSMITH RESOURCE VS ASX PEER GROUP

- Total Blacksmith DSO Mineral Resource Estimate of 243Mt at a grade of 59.3% Fe
- 95% of the Mineral Resource Estimate is classified as Indicated
- Blacksmith has the largest undeveloped hematite/goethite resources in the Pilbara wholly owned by an ASX-listed junior iron ore company
- DSO Mineral Resource Estimate increased through re-interpretation of Eagle deposit

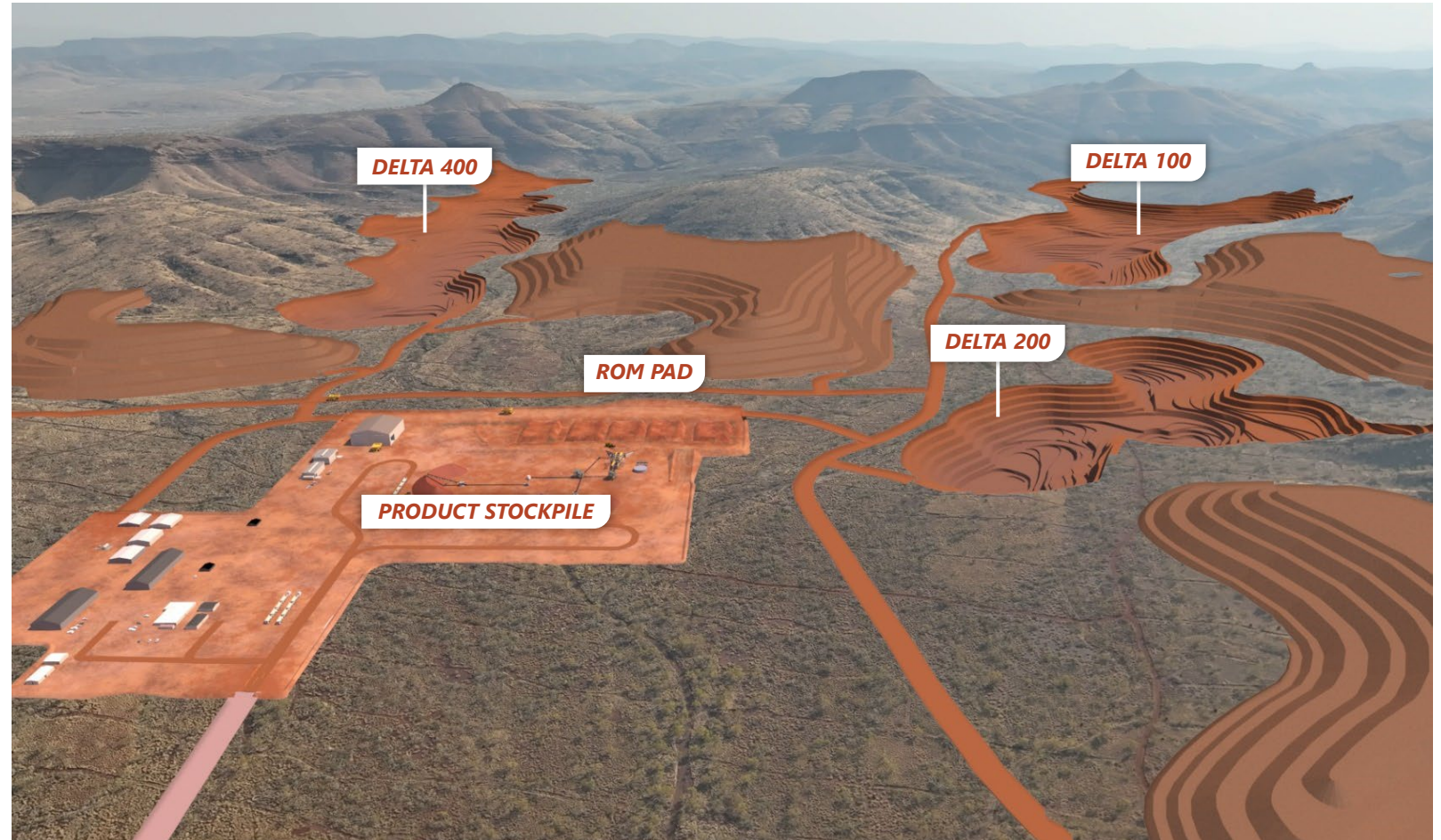


IRON ORE RESOURCES FOR SELECTED ASX-LISTED COMPANIES (excludes magnetite resources)



MINING METHODOLOGY

- Blacksmith will employ a conventional open pit mining methodology using a typical drill/blast/load/haul mining cycle
- The operations will be contract mining
- The mining contractor will supply, operate and maintain an appropriately sized mine production fleet
- The scheduling approach, target and constraints used in planning include a maximum total material movement allowance of 16Mtpa, maintaining a long-term production rate of 5Mtpa



LOGISTICS AND TRANSPORT

- Iron ore will be transported by road via a Whim Creek staging facility to the Utah Point Bulk Handling Facility
- The Whim Creek staging facility provides maximum operational flexibility for haulage, stockpiling and risk mitigation
- Red Hawk entered a partnership with MGM Bulk to develop the transport and logistics strategy

BLACKSMITH TO WHIM CREEK

332km on Mine Access Road and Manuwarra Red Dog Highway

WHIM CREEK TO UTAH POINT

114km on North West Coastal Highway and Great Northern Highway

MINE ACCESS ROAD

23km private haul road

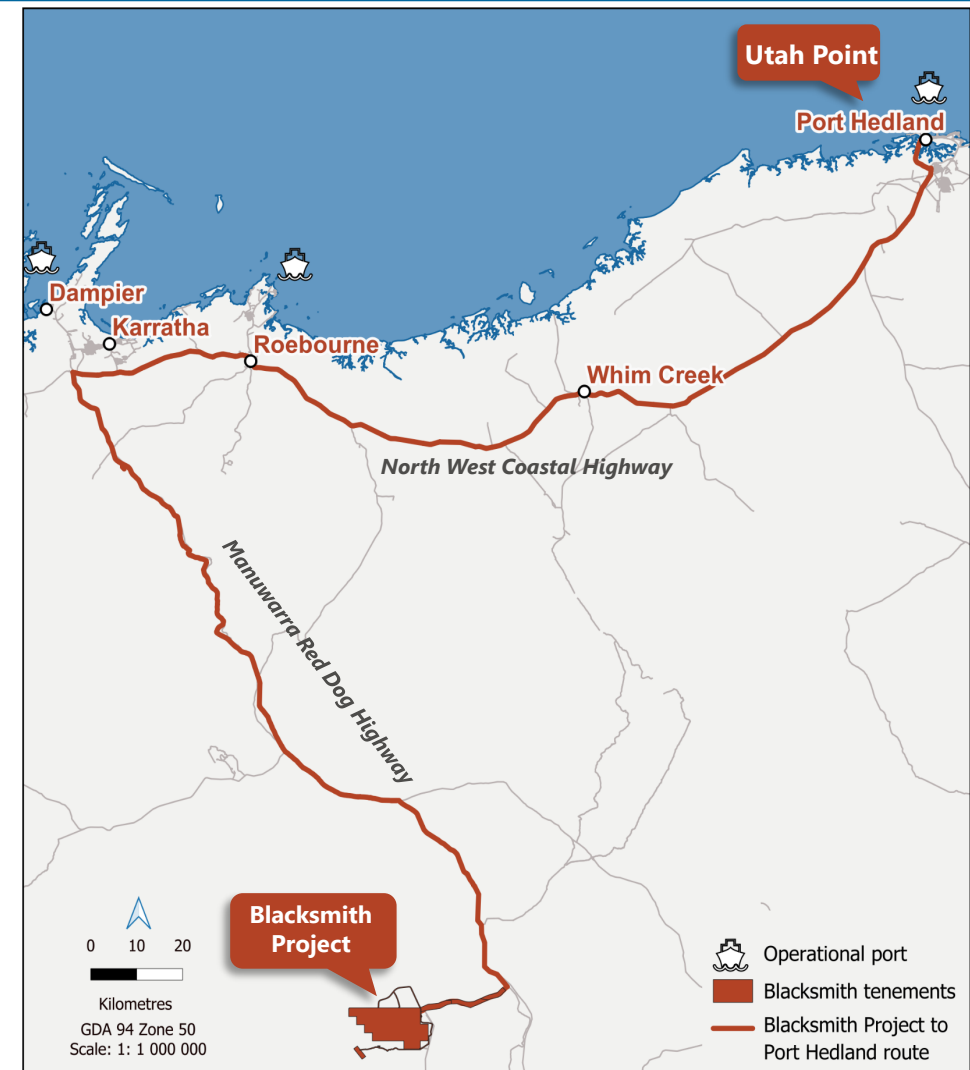
WHIM CREEK STAGING FACILITY

Stockpiling yard, capacity management functions, workshop, camp accommodation

ENDURING BENEFITS

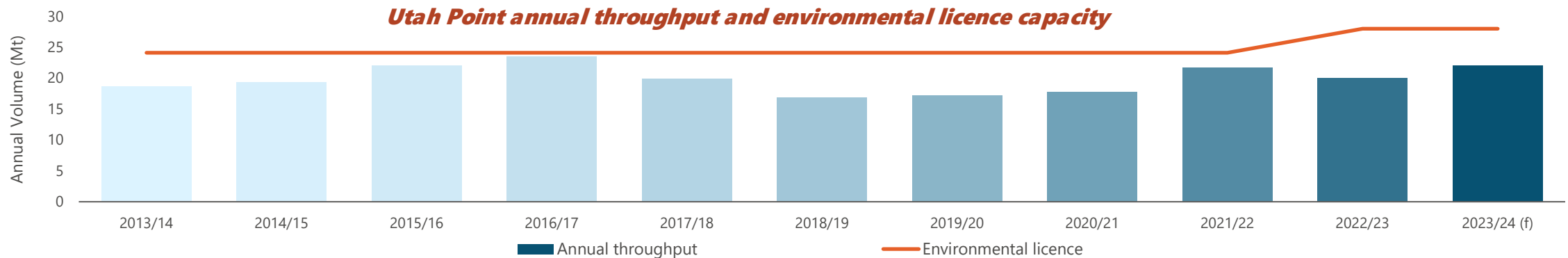
Grade separation over Rio Tinto rail line near Millstream

Roebourne heavy vehicle diversion



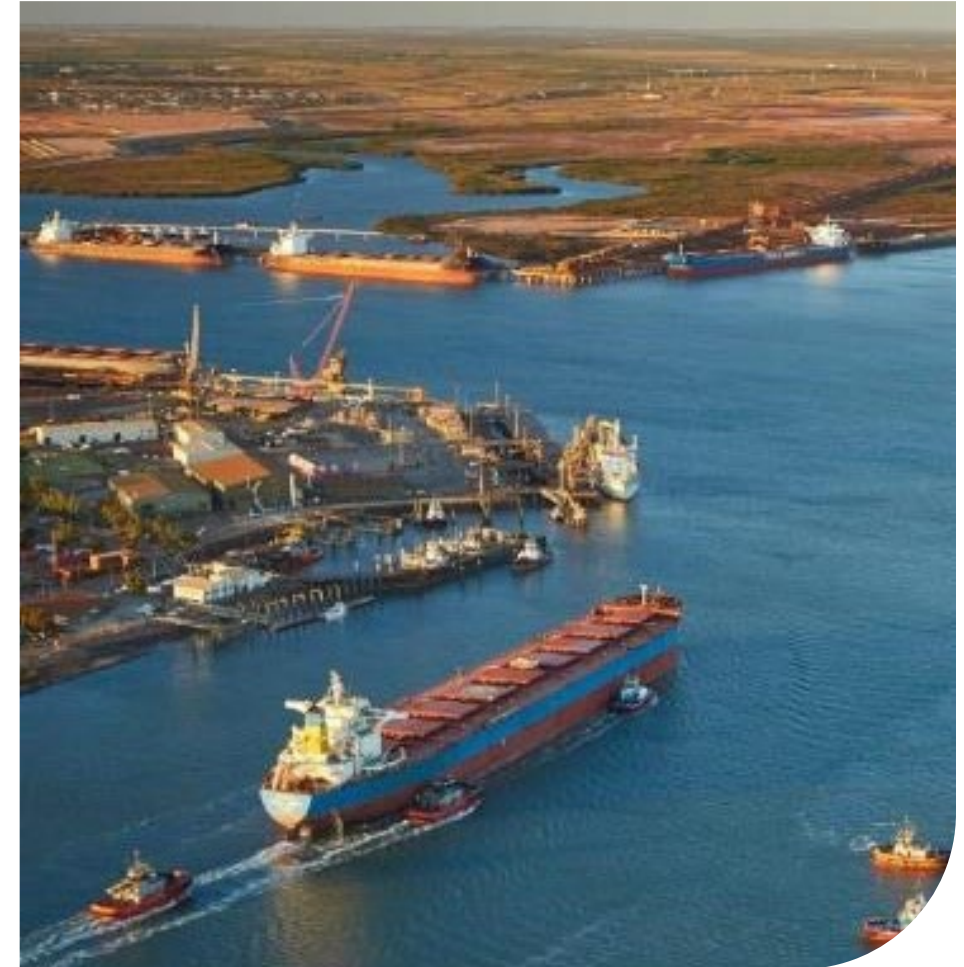
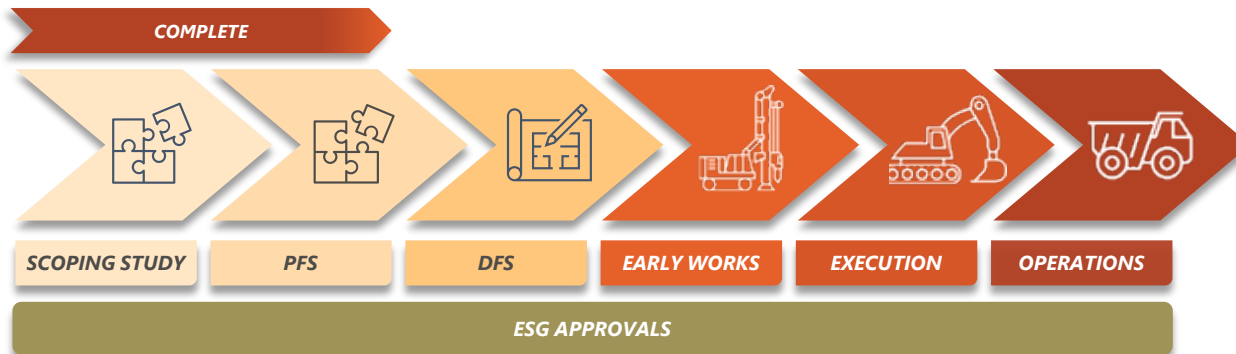
WHY UTAH POINT?

- Utah Point is the only third-party bulk handling port in the Pilbara
- Designed and funded by the WA State Government
- Red Hawk discussing allocation through multi-use bunkers with Pilbara Ports
- Red Hawk is talking to existing users about capacity sharing



MAKING PROGRESS

- Red Hawk is targeting the first ore from the Blacksmith Project in 4Q 2025
- The schedule leverages over 15 years of planning, surveys, permits, drilling, geotechnical analysis and metallurgical testwork
- Contractors will provide labour, equipment, systems for the construction and operation of:
 - mining
 - design, construction and operation of the process plant
 - road haulage
 - camp construction and operation
 - port operations
- To support FID, Red Hawk will advance resource definition, permits, approvals and finalise agreements



Utah Point Bulk Handling Facility
Image supplied by Pilbara Ports



***IT'S
TIME
TO
SOAR***



***DEVELOPING
THE BLACKSMITH
IRON ORE PROJECT***

ASX: RHK

www.redhawkmining.com.au

**Ground Floor
23 Ventnor Avenue
West Perth**